

APS-134 Labeler

Automatic Horizontal Wrap Labeler

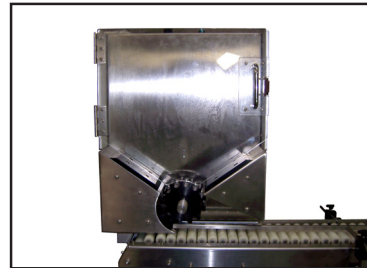


Key Features:

- Auto Label Learn™
- Label Head Dispenses up to 3" (7.5 cm) Tall Labels
- In Line Automatic Applications or Semi Automatic Use
- Angle roller conveyor
- Touch Screen Control System with Job Memory
- Heavy Duty Construction for 3 Shift Operations
- Sanitary Stainless Steel Frame
- Easy Adjusting Hand Wheels for Quick Setup
- Fully Synchronized Conveyor and Label Head

Options:

- Bulk loading magazine (Custom to container)
- Hot Stamp Date/Lot Coder
- Alpha Numeric Starter Kit
- Pneumatic Separator
- Clear Label Sensor
- Casters



Labelette
Labelers®

2685 S. Melrose Dr. Vista CA 92081 • 760.734.4177 • Fax 760.734.4188
Email: Sales@AccutekPackaging.com • AccutekPackaging.com

ACCUTEK
Packaging Equipment Companies, Inc.

APS-134 Labeler

Automatic Horizontal Wrap Labeler

Labelette's APS-134 is an easy to operate Automatic Horizontal Wrap Labeler. The **APS-134** is designed to label unwieldy, non-freestanding, round containers horizontally oriented with a full or partial wrap label such as pens, lip sticks, test tubes/ampules and other cylindrical containers. It features a 4 ft. long variable speed drive conveyor with adapted live puck system perfect for small cylindrical vials or tube containers. The label head is full synchronized with the conveyor and can dispense labels up to 3" (7cm) tall. The speed, versatility, and reliability of the **APS-134** exceed industry leaders in labeling equipment technology at a fraction of the price.



Dimensions:

Height: 48-60" (122-152.4 cm)
 Length: 48" (122 cm)
 Depth: 40" (101.6 cm)

Weight:

Approx. ~350 lbs. (158 kg)

Labeling Speed:

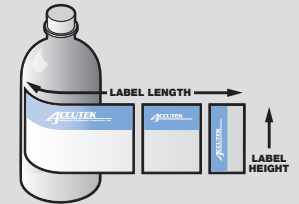
Up to 200 CPM*

Electrical:

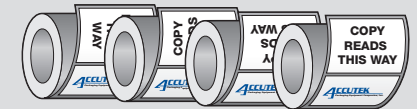
110 VAC - 10APMS, 56/60 Hz
 (220VAC Optional)

Label Size:

Length: 0.5"-11" (1.25-28 cm)
 Height: 0.5" - 3" (1.9-7 cm)



Label Dimensions



Label Direction is Job Specific

(Always Outside Peel)

Labelette
 Labelers®

ACCUTEK
 Packaging Equipment Companies, Inc.

Feature Comparison Chart

	Labelette	Competitors
• All motors are automatically synchronized for consistent efficient labeling	YES	NO
• No repositioning of label sensor is required for various label lengths	YES	NO
• Label Learn™ measures the label and adjusts the sensor accordingly	YES	NO
• One touch HMI Touch screen adjustment to change labeling speed	YES	NO
• Up to 30 job memories	YES	NO
• Touch screen with help menu's and trouble shooting guide	YES	NO
• LabelLearn™ ensures labels won't run out with a programmable label counter (for precise run of a set number of labels) to auto-stop	YES	NO
• Total bottles labeled counter	YES	NO
• LabelLearn™ can automatically stop labeling when a label is missing from the label roll	YES	NO
• Manufactured with major worldwide components including Panasonic, AllenBradly and Parker Hannifin. Unlike the proprietary over priced Components of our competition	YES	NO
• Accutek stocks over 27,000 different parts in over 40,000 sq ft of automated warehouse dedicated to ensuring next day in stock part delivery for over 20,000 customer machines currently in use	YES	NO
• Accutek machinery is designed in the USA and over 80% of Accutek's Product are manufactured in the USA by an American Company	YES	NO